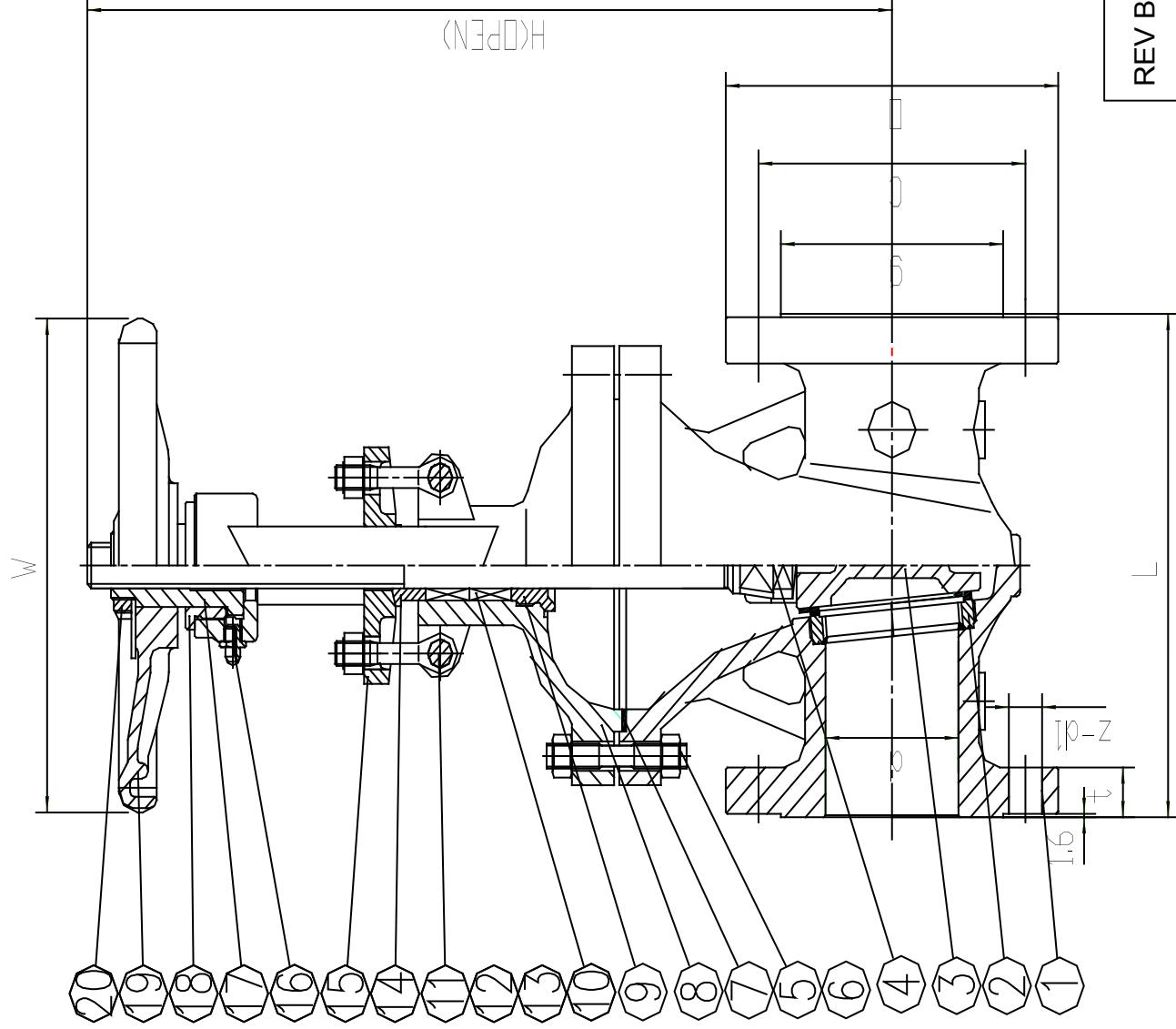


**TECHNICAL REQUIREMENTS**

1. DESIGN AND MANUFACTURE: API 600 or API 6D
2. FACE TO FACE: ASME / ANSI B16.10
3. END FLANGE DIMENSIONS: ASME / ANSI B16.5
4. PRESSURE-TEMP: ASME / ANSI B16.34
5. PRESSURE TEST: API 598



NO	PART NAME	METERIAL
1	BODY	A216-WCB
2	SEAT RING	A105+STL
3	WEDGE	A216-WCB+13Cr
4	STEM	A182 F6
5	BONNET BOLT	A193 B7
6	BONNET NUT	A194 2H
7	GASKET	304 SS + GRAPHITE
8	BONNET	A216-WCB
9	BACK SEAT	A182 F6
10	STEM PACKING	GRAPHITE
11	PIN	45
12	GLAND EYE BOLT	A193 B7
13	GLAND NUT	A194 2H
14	GLAND	A182 F6
15	GLAND FLANGE	A216-WCB
16	OIL CUP	
17	STEM NUT	ZCuAl10Fe3
18	RETAINING NUT	AISI 1035
19	HAND WHEEL	DUCTILE IRON
20	HAND WHEEL LOCK NUT	AISI 1035

SIZE	d	H	W	L	D	C	g	t	Z-d1
40	38	370	200	190	156	114.5	73	21	4-23
50	51	420	200	216	165	127	92	23	8-20
65	63	455	250	241	191	149	105	26	8-23
80	76	538	250	283	210	168.5	127	29	8-23
100	102	615	300	305	254	200	157	32	8-23
125	127	705	300	381	279	235	186	35	8-23
150	152	810	350	403	318	270	216	37	12-23
200	203	1005	450	419	381	330	270	42	12-26

REV B		
DATE	MAY 2011	
SCALE	TO FIT	

<b>John Valves</b>	
<b>7030A/8</b>	
<b>GATE VALVE OS&amp;Y CLASS 300 RF</b>	