

JOHN FIG 521

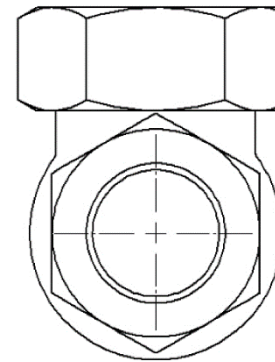
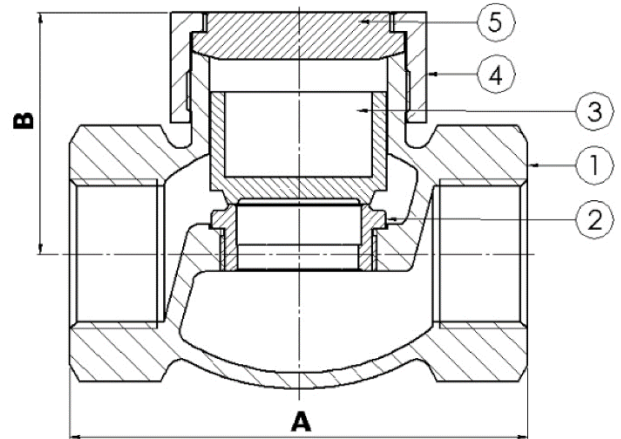
Lift Check Valve

Valve Overview

Body Material	Gunmetal
Size Range	DN15-DN50
Connections	Screwed Taper Pipe Thread - BSPT
Max Working Pressure	Water/Oil : 4000 kPa @ 120 °C Steam : 1750 kPa @ 260 °C
Standards	Australian AS 1271

Materials

ITEM	PART	MATERIAL	Standard
1	Body	Gunmetal	AS 1565 – C83600
2	Body Seat Ring	Stainless Steel	AS 2837 – 431
3	Disc	Stainless Steel	AS 2837 – 431
4	Bonnet Nut	Gunmetal	AS 1565 – C83600
5	Bonnet	Gunmetal	AS 1565 – C83600



Dimensions (Measurements in mm)

Size	A	B	Kg	Cv	Kv	K
15	74	42	0.5	1.9	0.05	16.2
20	89	48	0.8	4.3	0.10	15.0
25	102	54	1.2	8.0	0.19	13.8
32	116	64	1.9	12.9	0.30	13.2
40	132	70	2.7	19.0	0.45	12.6
50	149	90	4.9	35.0	0.83	11.4



HEAD OFFICE: 19 Martin Drive, Delacombe, VIC, 3356 | (03) 5336 2113
 WA: (08) 9249 1942 NSW: 0447 327 312 | QLD: 0427 784 419 | SA: 0418 503 570
sales@johnvalves.com.au | johnvalves.com.au

John Valves Pty Ltd Reserve the right to change materials and/or dimensions without notice 01/24

JOHN VALVESTM
 The Valve People Since 1896