

# JOHN FIG 560

## Safety/Relief Valve

This series of open spring relief valves have Carbon steel or Ductile iron bodies, stainless steel disc and seats, stainless steel spindles. Valves are available straight and right-angle patterns. The valves are also available in larger sizes. Contact John Valves for further details.

<b>Body</b>	CS-A216 WCB
<b>Trim</b>	Stainless Steel 316
<b>Size Range</b>	DN15 – DN100
<b>Pressure</b>	Cold Working Pressure: 70 to 1500 kPa
<b>Temperature</b>	Working Temperature: 200°C
<b>Connections</b>	Flanged Table 'F' (Ductile Iron) / Flanged Table 'H' (Carbon Steel)
<b>Options</b>	Spring Protector
<b>Standards</b>	

### Dimensions (mm)

Size	40	50	65	80	100
<b>A</b>	197	216	235	267	330
<b>B</b>	360	410	480	490	560

### Materials of Construction

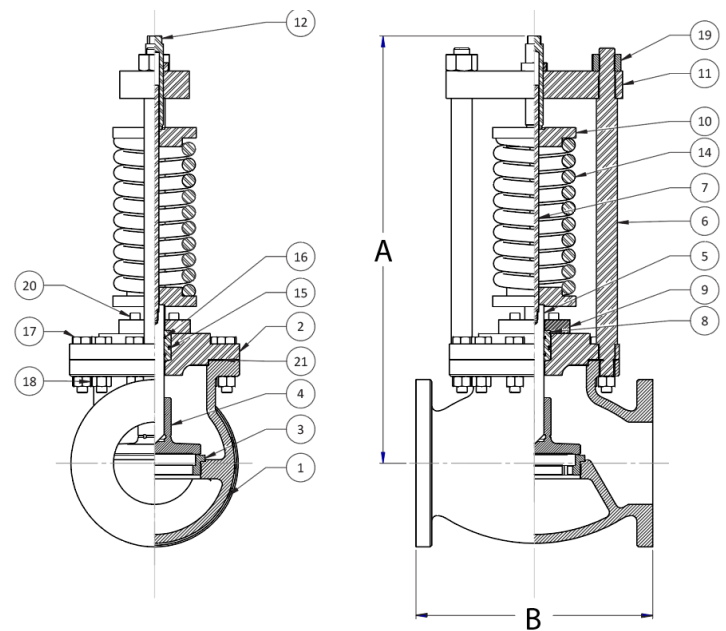
ID	PART	MATERIAL
1	Body	CS
2	Cover	CS
3	Disc	SS431
4	Seat	SS316
5	Cover Bolt	A2-70 ST.ST.
6	Nuts	A2-70 ST.ST.
7	Pillar	SS316
8	Pillar Nuts	SS316
9	Crosshead	SS316
10	Adjusting Bold	SS316
11	Lock Nut	SS316
12	Spring Plates	SS304
13	Gland	SS316
14	Gland Screws	SS316
15	Stem Bearing	Gunmetal
16	Stem	SS316
17	Gasket	FASIT202
18	Shaft O-Ring	Nitrile
19	Sleeve O-Ring	Nitrile
20	Spring	SS304

### Capacity: Water in L/M at 10% Overpressure

Set Pressure	DN 40	DN 50	DN 65	DN 80	100
69	84.1	187	266	326	376
345	187	364	568	816	1452
690	266	515	802	1130	2053
1034	326	631	977	1412	2514
1378	376	728	1136	1630	2903



40mm



\* Recommended spares; available from John Valves. Recommended inspection every 12 months.



John Valves Pty Ltd Reserve the right to change materials and/or dimensions without notice | 01/2024  
 Head Office: 19 Martin Drive, Delacombe, VIC, 3356 | (03) 5336 2113  
[sales@johnvalves.com.au](mailto:sales@johnvalves.com.au) | [johnvalves.com.au](http://johnvalves.com.au)

