

# JOHN FIG 802 – Two Piece

Cast Iron Swing  
Check Valve

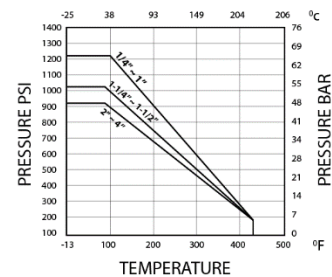
Fig 8028, 316 Stainless Steel Full Bore Two-Way, Two-Piece Manual Ball Valve provided with RPTFE seat, 304 SS handle full ISO thread lengths. This valve is suitable for various applications, from general industrial to high-temperature uses (up to 180°C). Lever operation is lockable and able to be locked in one position. Threads to ISO 7.1 Sealing Threads standard.

<b>Type</b>	Two-piece screwed stainless steel ball valve
<b>Body</b>	CF8M (316 Stainless Steel)
<b>Trim</b>	PTFE / CF8M
<b>Pressure Range</b>	PN63 (1000psi)
<b>Size Range</b>	DN8 – DN50
<b>Connections</b>	BSP Threaded Ends
<b>Working Pressure /Temperature</b>	160°C / 2.5MPa -29~38°C / 6.9MPa
<b>Shell Test</b>	10.4 MPa/60s
<b>Sealing Test</b>	7.6 MPa/60s
<b>Hermetic Sealing</b>	0.6 MPa/60s
<b>Standards</b>	API598



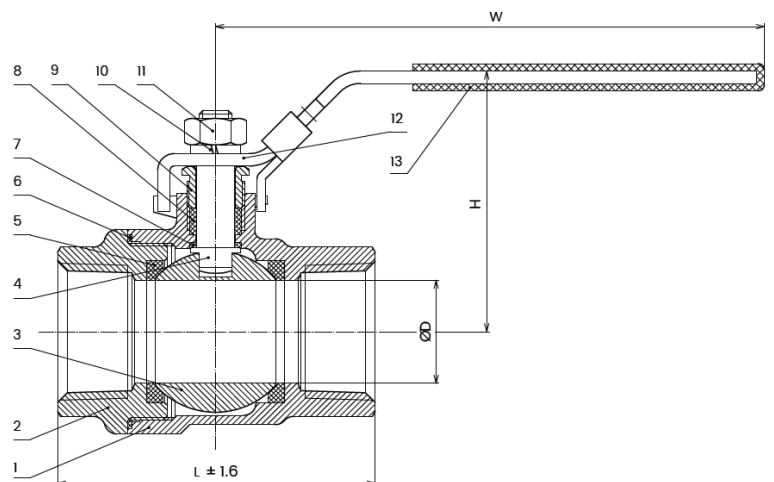
## Dimensions

Size	½"	¾"	1"	1 ¼"	1 ½"	2"
D (mm)	15	20	25	32	38	50
L (mm)	58	65	77	90	98.5	112.5
H (mm)	52	63	65	80	83.5	97
W (mm)	105	133	133	154	154	188



## Materials of Construction

ID	DESCRIPTION	MATERIAL
1	BODY-1	SS316
2	BODY-2	SS316
3	BALL	SS316
4	STEM	SS316
5	SEAT	PTFE
6	GASKET	PTFE
7	GASKET	PTFE
8	PACKING	PTFE
9	GLAND	SS304
10	SPRING WASHER	SS304
11	HEX NUT	A2-70
12	HANDLE	SS304
13	HANDLE COVER	PVC



John Valves Pty Ltd Reserve the right to change materials and/or dimensions without notice | 08/2024  
 Head Office: 19 Martin Drive, Delacombe, VIC, 3356 | (03) 5336 2113  
[sales@johnvalves.com.au](mailto:sales@johnvalves.com.au) | [johnvalves.com.au](http://johnvalves.com.au)



**JOHN VALVES**  
 The Valve People Since 1896