

# JOHN FIG 804 – Two Piece Flanged

## Ball Valves

A flanged 2-Piece Ball Valve is ideal for potable water applications. Excellent durability and corrosion resistance for use in all piping systems. The full bore design of the valve and the fact that it requires no specific tightening to close entirely mean that it produces minimum pressure drop in the system and maximum flow. The bolt lock behind the lever handle can be flipped on either option.

<b>Type</b>	Two-piece flanged stainless steel ball valve
<b>Body</b>	CF8M (316 Stainless Steel)
<b>Trim</b>	PTFE / CF8M
<b>Size Range / Pressure Range</b>	DN15-50 PN40 DN65-300+ PN16
<b>Connections</b>	Flanged
<b>Working Temperature</b>	-29~180°C / 6.9MPa,
<b>Shell Test</b>	6.0 MPa/60s
<b>Sealing Test</b>	2.4 MPa/60s
<b>Seat test</b>	0.6 MPa/60s
<b>Standards</b>	AS2129 Table E / ANSI 150/300/600/900 Connections should be ANSI RF Drilled to customers' specifications

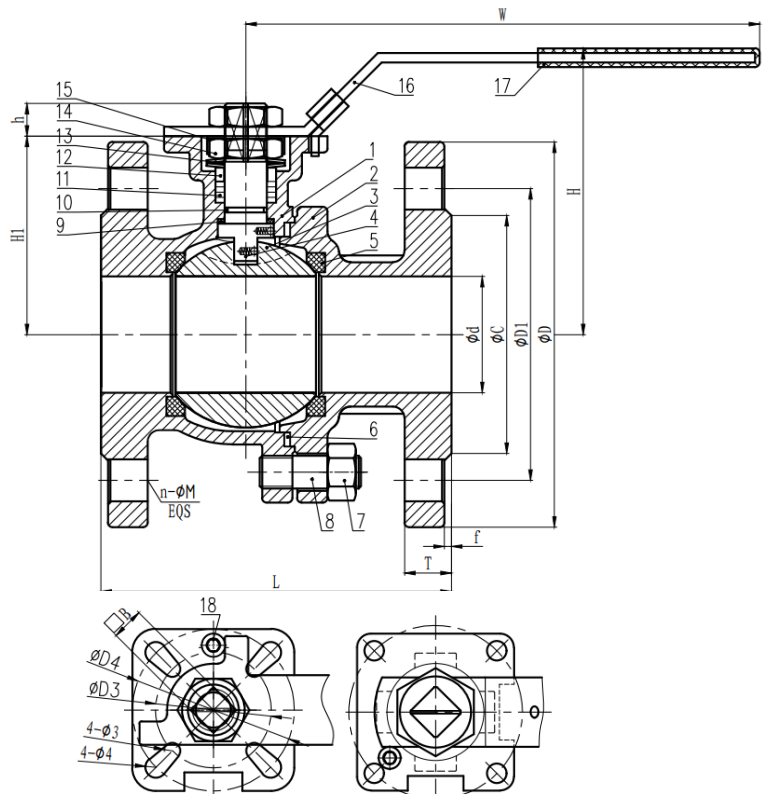


### Dimensions

Size	15	20	25	32	40	50	65	80	100	125	150	200
<b>d</b>	95	105	115	140	150	165	185	200	220	250	285	340
<b>D1</b>	65	75	85	100	110	125	145	160	180	210	240	295
<b>W</b>	141	141	162	162	220	220	285	285	380	456	656	1000
<b>L</b>	115	120	125	130	140	150	10	180	190	325	350	400
<b>H</b>	80	86	98	107	114	123	154	166	196	240	262	316

### Materials of Construction

ID	DESCRIPTION	MATERIAL
1	BODY	CF8M
2	CAP	CF8M
3	BALL	316
4	BALL SEAT	PTFE
5	STEM	316
6	STEM PACKING	PTFE
7	O-RING	VITON
8	V-RING PACKING	PTSE
9	GLAND	304
10	BELIEVILLE WASHER	301
11	NUT	304
12	THRUST WASHER	304
13	WASHER	304
14	STOP PIN	304
15	HANDLE	304
16	PLASTIC COVER	Plastics
17	BODY GASKET	PTFE
18	NUT	304
19	BOLT	304



DN125-150



John Valves Pty Ltd Reserve the right to change materials and/or dimensions without notice | 08/2024  
 Head Office: 19 Martin Drive, Delacombe, VIC, 3356 | (03) 5336 2113  
[sales@johnvalves.com.au](mailto:sales@johnvalves.com.au) | [johnvalves.com.au](http://johnvalves.com.au)

